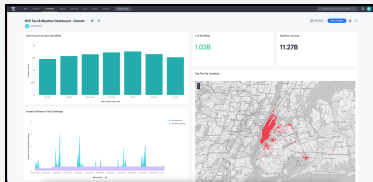


## Partnership Overview

# Dremio & ThoughtSpot

Ask any question of your data lake, and get the answers you need, when you need them.

## At a Glance



Dremio and ThoughtSpot enable users to ask any question of their newest and fastest-growing data sources by connecting them directly to data lake storage.

## Features

- Dremio allows users to connect directly to data lake storage and other data sources.
- Dremio's semantic layer and ThoughtSpot's intuitive search functionality allows technical and non-technical users to query data quickly and easily.
- ThoughtSpot's native connector for Dremio ensures a seamless user experience between Dremio and ThoughtSpot.

## Solution Overview

Data teams are struggling to manage growing data volumes and an increasing number of technical and non-technical data consumers need access to data for Business Intelligence (BI) and reporting.

However, many data teams struggle to provide easy and efficient access to the data lake, where the newest and fastest-growing sources of customer and operational data are stored.

ThoughtSpot is a powerful tool providing self-service analytics capabilities to a broad range of users. Data consumers can ask questions of their data using intuitive search functionality and build dashboards and reports at the “speed of thought.”

Dremio is an open lakehouse platform connecting ThoughtSpot users directly to data lake storage. Dremio simplifies data pipelines, accelerates query performance, and provides self-service access to the data lake for exploration, BI, and reporting.

## Solution Benefits

### Deliver insights at the speed of thought

Ask questions of your data lake and create powerful dashboards and reports in seconds.

### Democratize access to data

Leverage Dremio's semantic layer and ThoughtSpot's search functionality to provide technical and non-technical data consumers easy access to data for analytics.

### Simplify data management

Reduce the burden on your data teams by connecting directly to the data lake, eliminating complex ETL pipelines and data copies.